

# Coffee



# V60 Coffee Dripper

Widely recognized around the world, the V60 pour over

Why the cone shape?

The cone shaped paper filter adds depth to the coffee layer, so that the water flows to the center, expanding the amount of time the water is in contact with the ground coffee.



## VD-01W

C/T48 724204  
W115 • D100 • H82  
top opening diameter 95  
1 - 2cups



## VD-01R

724228



## VD-02W

C/T48 724303  
W137 • D116 • H102  
top opening diameter 116  
1 - 4cups



## VD-02R

724327



## VD-01T

C/T48 723016  
W115 • D100 • H82  
top opening diameter 95  
1 - 2cups



## VD-02T

C/T48 723023  
W137 • D116 • H102  
top opening diameter 116  
1 - 4cups



## VD-03T

C/T36 723030  
W157 • D137 • H122  
top opening diameter 137  
1 - 6cups



For hot drink



**VDG-01W**

C/T24 724402  
W124 • D110 • H78  
top opening diameter 97  
1 - 2cups



**VDG-01R**

724464



**VDG-01B**

724419



**VDG-02W**

C/T24 724426  
W128 • D115 • H95  
top opening diameter 115  
1 - 4cups



**VDG-02R**

724471



**VDG-02B**

724433



**VDG-03B**

C/T24 724525  
W165 • D138 • H115  
top opening diameter 136  
1 - 6cups

# V60 Glass Dripper

# V60 Ceramic Dripper



## VDC-01W

C/T40 723115  
W119 • D100 • H82  
top opening diameter 95  
1 - 2cups



## VDC-01R

724013



## VDC-02W

C/T36 723122  
W140 • D120 • H102  
top opening diameter 116  
1 - 4cups



## VDC-02R

724037



For microwave



Do not expose to  
open flames



**new**

## XVDD-3012W

C/T12 020290  
W140 • D121 • H210  
Dripper : 1 - 4 cups

Pot : practical capacity 600ml



## VDS-3012R

C/T12 142268  
W130 • D107 • H174  
Dripper : 1 - 2cups

Pot : practical capacity 360ml



**new**

## CCS-1W

C/T24 040663  
Cup : W117 • D 95 • H 65  
top opening diameter 95  
Saucer : φ140  
Cup : full capacity 150ml



**new**

## CCS-5012W

C/T12 040670



# V60 Metal Dripper



**VDM-02HSV**

C/T12 724129  
 W145 · D120 · H90  
 top opening diameter 120  
 1 - 4cups



**VDM-02BC**

724136



**VDM-02CP**

724143



**VDP-02CP / VDPC-02CP**

C/T12  
 W135 · D120 · H92  
 top opening diameter 120  
 1 - 4cups



For hot drink



**new**

**VPD-02HSV**

C/T12 142053  
 W 160 · D 125 · H 200  
 top opening diameter 115  
 Pot : practical capacity 700ml



# V60 Coffee Server



For microwave



Do not expose to  
open flames



## VCS-01B

C/T24 019119  
W162 • D114 • H110  
top opening diameter 92  
practical capacity (below band) 450ml  
microwave safe including lid



## VCS-02B

C/T24 019126  
W180 • D125 • H133  
top opening diameter 92  
practical capacity (below band) 700ml  
microwave safe including lid



## VCS-03B

C/T24 019133  
W185 • D137 • H157  
top opening diameter 92  
practical capacity (below band) 1,000ml  
microwave safe including lid



## XVD-36B

C/T24 019805  
W130 • D107 • H106  
top opening diameter 85  
practical capacity 360ml  
1 - 3cups  
microwave safe including lid



## XVD-60B

C/T24 019812  
W137 • D121 • H128  
top opening diameter 85  
practical capacity 600ml  
2 - 5cups  
microwave safe including lid



## XVD-80B

C/T24 019829  
W143 • D132 • H145  
top opening diameter 85  
practical capacity 800ml  
2 - 6cups  
microwave safe including lid



## XGS-36TB

C/T24 020108  
W130 • D107 • H99  
top opening diameter 77  
practical capacity 360ml  
1 - 3cups  
microwave safe including lid



## XGS-60TB

C/T24 020115  
W145 • D121 • H120  
top opening diameter 77  
practical capacity 600ml  
2 - 5cups  
microwave safe including lid



## XGS-80TB

C/T24 020122  
W150 • D129 • H138  
top opening diameter 77  
practical capacity 800ml  
2 - 6cups  
microwave safe including lid



40 sheets

**VCF-01-40W**

C/T1 0×30 723214  
1 - 2cups



40 sheets

**VCF-02-40W**

C/T1 0×24 723221  
1 - 4cups



40 sheets

**VCF-03-40W**

C/T1 0×18 723238  
1 - 6cups



40 sheets

**VCF-01-40M**

C/T1 0×30 723245  
1 - 2cups



40 sheets

**VCF-02-40M**

C/T1 0×24 723252  
1 - 4cups



40 sheets

**VCF-03-40M**

C/T1 0×18 723269  
1 - 6cups



100 sheets

**VCF-01-100MK**

C/T 5×20 723801  
1 - 2cups



100 sheets

**VCF-02-100MK**

C/T 5×16 723818  
1 - 4cups



100 sheets

**VCF-01-100W**

C/T150 723313  
1 - 2 cups



100 sheets

**VCF-02-100W**

C/T120 723320  
1 - 4 cups



100 sheets

**VCF-03-100W**

C/T100 723337  
1 - 6 cups



100 sheets

**VCF-01-100M**

C/T150 723344  
1 - 2 cups



100 sheets

**VCF-02-100M**

C/T120 723351  
1 - 4 cups



100 sheets

**VCF-03-100M**

C/T100 723368  
1 - 6 cups





## Lovedori means to make a cup of coffee for someone from your heart

Pour over coffee takes some effort, but this is the reason it tastes so good. Enjoy this experience with somebody, and it will surely make everyone happy.



### VCFL-02-20W

C/T300 (10 × 30) 726314  
1 - 4cups (O2size)

20 sheets



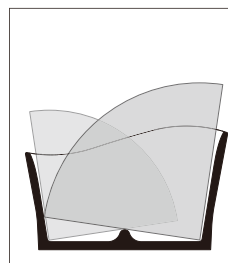
## We aimed for an easy to use paper filter holder

The slope at the bottom makes it easy to take out the paper filter. Small contact surface between the paper filter and the stand keeps it sanitary. 100 sheets of paper filters can be stored in this holder.



### VPS-100W

C/T24 723924  
W165 • D68 • H100



Very little surface contact keeps it clean.



The body is sloped on the bottom, making it easy to take out individual filters.

## Canister



### MCN-200R

C/T24 413672  
φ 99 • H 142  
top opening diameter 96  
coffee grounds 200 g  
full capacity 800ml



### MCN-200B

413627



### MCN-300R

C/T24 413689  
φ 99 • H 189  
top opening diameter 96  
coffee grounds 300 g  
full capacity 1,000ml



### MCN-300B

413634





## V60 Coffee Kettle

### Easy to pour, coffee drip kettle with a slim spout

This drip kettle with a slim spout makes it easier to control the amount and speed of hot water being poured, making it useful when brewing a V60.

Compatible with IH Cooking Heaters.



#### **VKB-100HSV**

C/T12 021136  
W295 · D144 · H130  
top opening diameter 77  
practical capacity 600ml



#### **VKB-120HSV**

C/T12 021006  
W274 · D144 · H147  
top opening diameter 77  
practical capacity 800ml



## V60 Coffee Kettle Copper



### VKBN-90CP

C/T6 021099  
W290 · D126 · H145  
top opening diameter 71  
practical capacity 700ml



## V60 Drip Thermometer

Know accurate temperature while pouring with a V60 Drip Kettle

The key to brewing tasty hand dripped coffee is managing the weight, time and temperature. The V60 Drip Thermometer allows for thermometry even while dripping. Measure the temperature at the root of the nozzle.

Compatible with the VKB-100HSV, VKB-120HSV, and EVKB-80HSV



**VTM-1B (Display in Celsius)**  
**VTM-1B-U (Display in Fahrenheit)**

C/T24 021181 (1B) / 021198 (1B-U)

[Thermometer]  
 W 45 · D 107 · H 140  
 [Thermometer+ Lid]  
 W 83 · D 107 · H 140



The thermometer and lid are detachable.



Real time digital display



Measure the temperature at the root of the nozzle.



**EVKB-80-HSV**

C/T6  
 W 295 · D 156 · H 175  
 top opening diameter : 77  
 capacity : minimum 150ml maximum 800ml





## The electric kettle with temperature control is newly launched.

Feel your taste change by only 1°C difference.

This is the electric kettle for hand dripping with the temperature control from 60°C to 96°C.



**new**

**EVKT-80-HSV**

C/T6

W 300 • D 190 • H 185

top opening diameter : 77

capacity : minimum 300ml maximum 800ml



**An enamel drip kettle makes its appearance.**

The thin spout drip kettle enables you to easily control the amount and speed of water, useful for brewing delicious coffee. Enjoy the natural atmosphere produced by the combination of enamel and natural wood.



Induction heater (IH) and direct flame are available.



The thin spout is suitable for dripping.



**new**

**BDK-80-W**

C/T6 021501  
 W 280 • D 136 • H 170  
 top opening diameter 77  
 practical capacity 800ml



**new**

**BCN-100-W**

C/T12 413726  
 φ 102 • H 72  
 top opening diameter 102  
 full capacity 400ml  
 practical capacity : tea leaves • coffee grounds/ 100g(approx.)



**new**

**BCN-200-W**

C/T12 413733  
 φ 102 • H 143  
 top opening diameter 102  
 full capacity 800ml  
 practical capacity : tea leaves • coffee grounds/ 200g(approx.)



For hot drink



**SGS-80**

C/T 6 × 8 240834  
 φ 60 · H 70  
 top opening diameter 60  
 full capacity 80ml



**SGS-140**

C/T 6 × 8 240841  
 φ 69 · H 90  
 top opening diameter 69  
 full capacity 140ml



For microwave



Do not expose to open flames



**new**  
**GS-45-T**

C/T24 020207  
 W 150 · D 116 · H 105  
 top opening diameter 82  
 practical capacity : 450ml



**new**  
**GS-70-T**

C/T24 020214  
 W 160 · D 125 · H 124  
 top opening diameter 82  
 practical capacity : 700ml

**A Coffee pot designed with safety in mind,  
 and compatible with commercial machines**

A spout made of resin which is easy to pour and has good water flow.  
 The lid is a single-push type that enables easy opening and closing.  
 The handle is a safe two-banded design. Made with heatproof glass,  
 this coffee pot is dishwasher safe.



Includes dettachable cap.



Large opening that is easy to wash.



For hot drink



**CDH-18CBR**

C/T12 171527  
 W210 · D165 · H173  
 top opening diameter 90  
 practical capacity (below band) 1,800ml



# Coffee Mill

## Important preparations before brewing coffee

All manual coffee grinders use mills made of ceramic. Ceramic mills keep the temperature down when grinding and can be easily rinsed with no potential rusting. Coffee mill size, material and variations are all important items for deliciously brewed coffee.



**MSS-1B**

C/T24 707405  
W150 · D72 · H220  
top opening diameter 70  
coffee grounds 24g 2cups  
Washable burr



**MCD-2**

C/T12 707337  
W143 · D88 · H208  
coffee grounds 35g



**CM-502C**

C/T12 707467  
W152 · D104 · H231  
coffee grounds 40g



**MSCS-2TB**

C/T12 707108  
W172 · D93 · H231  
top opening diameter 90  
coffee grounds 100g  
Washable burr



**MCS-1**

C/T12 707344  
W148 · D98 · H210  
top opening diameter 81  
coffee grounds 10g



**MM-2**

C/T24 707504  
W160 · D100 · H185  
top opening diameter 79  
coffee grounds 24g



**CMHN-4**

C/T20 707320  
W208 · D105 · H215  
top opening diameter 79  
coffee grounds 120g

The glass is not heatproof glass.



**MXR-2TB**

C/T12 707627  
W183 · D75 · H175  
coffee grounds 40g  
Washable burr

## Ceramic and olive wood coffee mill

This coffee mill features a combination ceramic hopper and olive wood container, highlighting a balance between nature and design.



### MCW-2-OV

C/T12 707375  
W 167 · D 85 · H 215  
coffee grounds 30g  
Washable burr



Choose the fineness of coffee grounds you like by turning the control knobs.



The slim middle makes it easy to grip while grinding the coffee.



## The particle size of coffee grounds determines the flavor of a cup of coffee.

Particle size can be adjusted with 44 grind settings according to your taste, from medium fine to coarse grind, the best for hand dripping.



### new

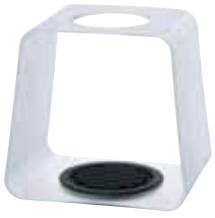
### V60 Electric Coffee Grinder EVCG-8B

C/T2  
W 133 · D 220 · H 390  
coffee grounds 240g



## A coffee drip stand for pour over

The V60 drip scale can be set together and used.



**DSC-1T**

C/T12 021297  
W 170 • D 134 • H 160



**DSC-1TB**

021303



**VSS-1T**

C/T12 021228  
W 132 • D 140 • H 180



**VSA-1SV**

C/T12 021372  
W 120 • D 136 • H 168



**VSA-1B**

021396



**VSA-1GD**

021389



**VSA-1006-SV**

C/T6 021402  
W 120 • D 150 • H 220



**VAS-1**

C/T12 021235  
W 195 • D 140 • H 215



**VAS-8006-G**

C/T6 021327  
W 190 • D 155 • H 250



**VAS-8006-HSV**

C/T6 021242  
W 190 • D 155 • H 250



## Olive Wood Series



**VSS-1-OV**

C/T6 021204  
W 145 • D 160 • H 230



**VSS-1206-OV**

C/T6 021259  
W 156 • D 160 • H 248



## Coffee Stand

This drip stand allows you to adjust its height according to the server size.



**new**

**VPOS-1506-SV**

C/T6 142701  
W 150 • D 150 • H 262



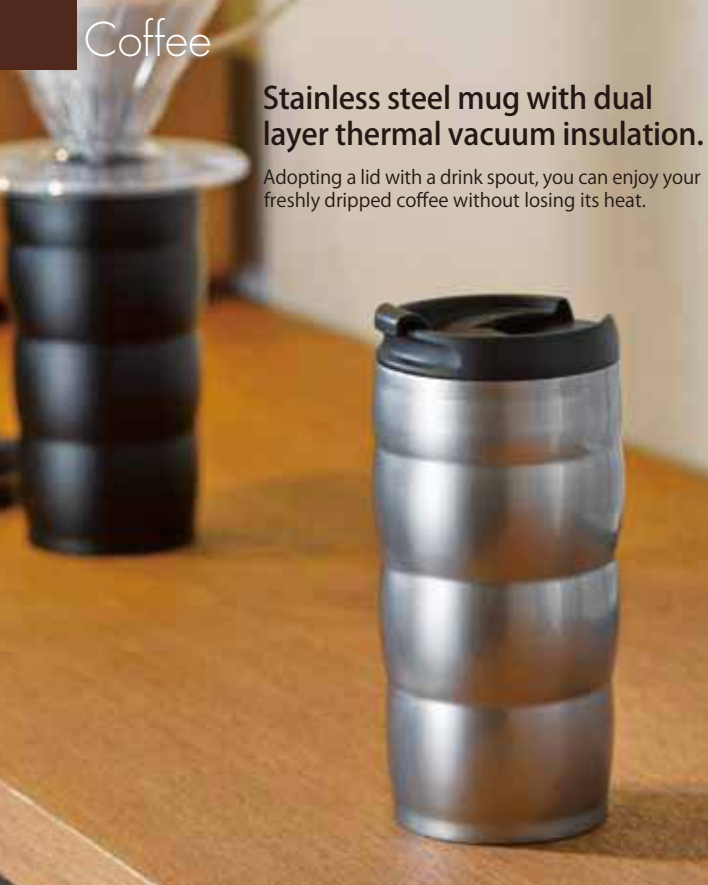
Suitable for 01 – 03 size of coffee server and dripper.



The V60 drip scale can be set together and used.

**Stainless steel mug with dual layer thermal vacuum insulation.**

Adopting a lid with a drink spout, you can enjoy your freshly dripped coffee without losing its heat.



**VUW-35HSV**

C/T24 222212  
 φ 74 · H 156  
 top opening diameter 70  
 practical capacity 350ml



**VUW-35B**

222229



Sectional view: dual layer vacuum thermal insulating structure.



By taking off the lid, you can directly hand drip coffee into it.



Lid with a drink spout



**The liquid does not spill out even if it is tilted, allowing you to carry it with you.**

V60 Soto Mug with vacuum insulating double wall enables you to carry freshly-brewed hot coffee, since you can remove its lid and place a dripper there. You can also carry iced coffee keeping it cold.



Lid with a drink spout



**new**  
**VSW-35HSV**

C/T24 222311  
 W 79 · D 69 · H 177 □径 55  
 practical capacity 350ml



**new**  
**VSW-35B**

222328



**This double wall, stainless steel coffee server maintains the temperature of the coffee.**

A vacuum insulating double wall, stainless steel coffee server is introduced to allow for greater enjoyment of delicious coffee for longer. It is designed to fit the V60 dripper for the tastiest coffee.



**new**

**VHS-60W**

C/T12 220560  
W 161 • D 127 • H 142  
top opening diameter 80  
practical capacity 600ml  
2 - 5 cups



**new**

**VHS-60R**

220577



**new**

**VHS-60B**

220584

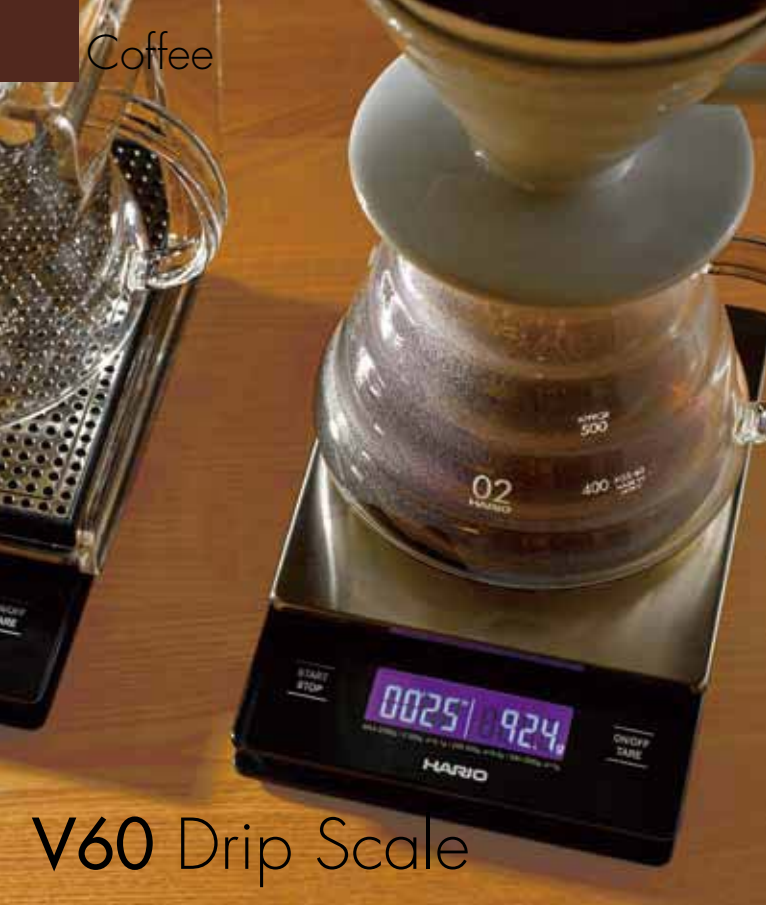


**new**

**VHS-80B**

C/T12 220591  
W 164 • D 132 • H 162  
top opening diameter 80  
practical capacity 800ml  
2 - 6 cups





# V60 Drip Scale

## Requirements for brewing delicious coffee

In order to brew delicious coffee, quantity and extraction time are essential. The V60 drip scale is used to simultaneously measure both of these factors. \*The V60 metal drip scale is equipped with a rechargeable battery and has a backlight design.



Timer Scale

Both extraction quantity and extraction time can be measured simultaneously.



薄型なのでコンパクトに収納できます。

Due to its thinness, compact storage is possible.



The stainless weighing platform can be removed by turning.

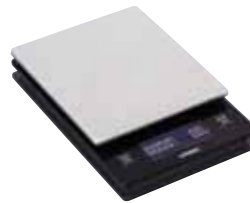


Dirt is easily wiped off, and care for the device is simple.



### VST-2000B

C/T20 021211  
W 120 · D 190 · H 29  
unit of display : 2 - 2000 g  
maximum count up time :  
99 minutes 59 seconds



### VSTM-2000HSV

C/T20 021310  
W 120 · D 175 · H 31  
unit of display : 2 - 2000 g  
maximum count up time :  
99 minutes 59 seconds



### M-12SV

C/T48 716223  
W 96 · D 53 · H 35  
full capacity 12g



### M-12CP

C/T48 716230



### new M-12C

C/T48 716674  
W 85 · D 55 · H 40  
full capacity 12g



### new M-12WD

C/T48 716667  
W 100 · D 57 · H 40  
full capacity 12g



## Authentic coffee made with style

The dripper is based on the V60 cone shape. You can enjoy the ease of the paper filter pour over, brewing directly into a carafe. The silicone band can be removed and washed. The dripper is designed to stand by itself.



For hot drink



### VDD-02B

C/T12 142558  
W 135 • D 125 • H 198  
top opening diameter 115  
practical capacity (below band) 700ml  
1 ~ 4cups



For hot drink



### CPSS-2-TB

C/T24 153608  
W113 • D78 • H172  
top opening diameter 74  
practical capacity 240ml  
1 ~ 2cups



### CPSS-2-R

153615



## Extract the coffee with a simple press The coffee press

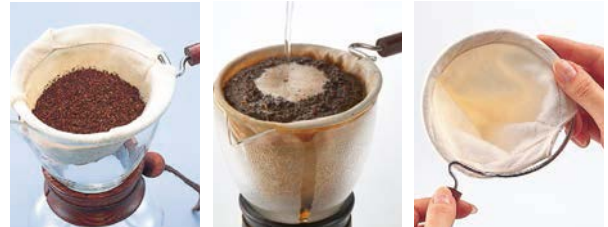
Place course ground coffee, and moisten with boiling water for approximately one minute. The longer the moistening time, the richer the taste will be.

※ Pour the boiling water gently along the wall of the glass. Press the knob down slowly after approximately two minutes.



## Cloth Drip

Due to the slow extraction of coffee through the fine and delicate cotton flannel, it never compromises on the acidity, bitterness, and flavor from the bean's original characteristics. Furthermore, you will be able to feel the coffee's rich taste from the coffee oils, which is an advantage to this method.



Medium grind coffee grounds

Let the coffee grounds expand.

Cloth filter : Cotton flannel

● After using the filter cloth, please rinse thoroughly. Place the filter in a container with clean water and store it inside the refrigerator.

※ This is to prevent oxidation of the oil of the remaining coffee grounds on the cloth filter.  
 ※ The cloth filter can be replaced.



For hot drink



### DPW-1

C/T12 331723  
 φ 95 · H 168  
 top opening diameter 93  
 practical capacity 240ml  
 1 - 2cups



### DPW-3

C/T12 331730  
 φ 110 · H 195  
 top opening diameter 101  
 practical capacity 480ml  
 3 - 4cups

## Cloth Drip Olive wood series

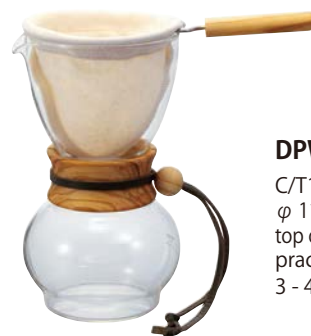


For hot drink



### DPW-1-OV

C/T12 131811  
 φ 95 · H 168  
 top opening diameter 93  
 practical capacity 240ml  
 1 - 2cups



### DPW-3-OV

C/T12 131828  
 φ 110 · H 195  
 top opening diameter 101  
 practical capacity 480ml  
 3 - 4cups



## Olive wood series



For hot drink



### VDG-01-OV

C/T24 724532  
 φ120 · H 77  
 top opening diameter 97  
 1 - 2 cups



### VDG-02-OV

C/T24 724549  
 φ120 · H 95  
 top opening diameter 115  
 1 - 4 cups



For hot drink

## Coffee Server



### VCWN-40-OV

C/T24 019324  
 W 177 · D 118 · H 104  
 top opening diameter 88  
 practical capacity 400ml



### VCWN-60-OV

C/T24 019331  
 W 182 · D 128 · H 121  
 top opening diameter 88  
 practical capacity 600ml

## Press Coffee

Because coffee presses extract coffee oils, a main flavor ingredient in coffee, you can enjoy the individuality of the coffee beans. The olive wood design creates an atmosphere of luxury and relaxation.



For hot drink



### CPSW-2-OV

C/T12 153714  
 W 114 · D 80 · H 170  
 top opening diameter 73  
 practical capacity 300ml  
 2 cups



### CPSW-4-OV

C/T12 153721  
 W133 · D95 · H186  
 top opening diameter 90  
 practical capacity 600ml  
 4 cups



### DGC-40-OV

C/T12 221901  
 φ 128 · H 224  
 top opening diameter 99  
 practical capacity 400ml  
 3 cups





**Authentic aroma without paper filters**

Introducing a specialized stainless mesh that can extracts coffee oil which is one of the components of coffee's great flavor. This enables you to enjoy the true aroma unique to coffee.



Dripper structure



Compact storage



Graduated measuring scale inside.



For hot drink



**CFOD-1B**

C/T24 171404  
W 115 · D 110 · H 82 (includes the attachment)  
1 cup



**CFO-1B**

C/T24 171077  
W118 · D96 · H148  
top opening diameter 82  
practical capacity 200ml  
1 cup



**CFOD-02-B**

C/T24 171473  
W121 · D135 · H105  
1 - 4 cups



**CFOD-02-R**

171626



For hot drink



**CFO-2B**

C/T24 171008  
W150 · D105 · H171  
top opening diameter 96  
practical capacity 300ml  
2 cups



Put in the coffee grounds.



Start pour over.



Close the lid and directly pour.





## An all stainless steel dripper with metal filter .

In the dripper, two finely etched mesh filters overlap. Appreciate the translucent liquid as if prepared with a paper filter, along with a rich flavor and a touch of the coffee's natural oils unique only to this metal filter.



The precision double mesh filter does not allow the finer coffee powder to pass through.



Coffee oil is extracted.



For hot drink



**new**

**MDD-02SV**

C/T12 060746

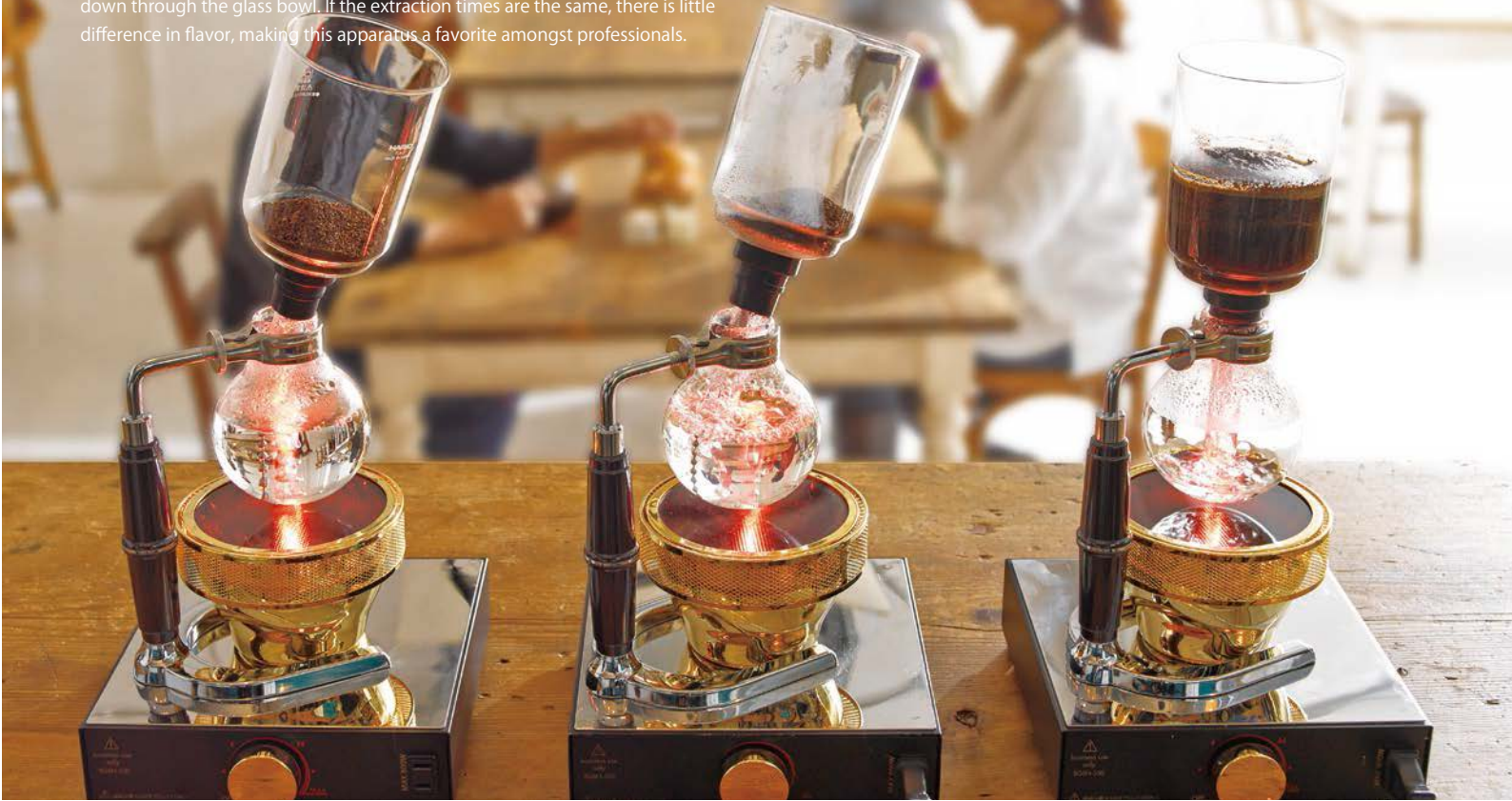
W 165 · D 123 · H 210

top opening diameter 116

practical capacity 700ml

## A coffee syphon with outstanding presentation

While enjoying a rich aroma, you can also visually enjoy the coffee moving up and down through the glass bowl. If the extraction times are the same, there is little difference in flavor, making this apparatus a favorite amongst professionals.



**MCA-3**  
C/T10 525016  
W165 · D115 · H290  
top opening diameter 72 (upper)  
practical capacity 360ml  
3cups



**TCA-2**  
C/T12 503014  
W160 · D95 · H320  
top opening diameter 87 (upper)  
practical capacity 240ml  
2cups



**TCA-3**  
C/T12 503113  
W160 · D95 · H333  
top opening diameter 87 (upper)  
practical capacity 360ml  
3cups



**TCA-5**  
C/T12 503212  
W160 · D110 · H360  
top opening diameter 101 (upper)  
practical capacity 600ml  
5cups



**DA-1SV**  
C/T12 511002  
W138 · D88 · H188  
top opening diameter 67 (upper)  
practical capacity 120ml  
1cup





## New Style Coffee Syphon

The Coffee Syphon Next and the Coffee Syphon Hario Sommelier both come with the stainless metal and cloth filter assemblies. The Coffee Syphon Hario Sommelier is different from past syphons, as it is designed in the image of a wine decanter, so that you can enjoy the aroma of the coffee.



※The handle is made of rubber and gives you a firm grip.

### NXA-5

C/T12 502918  
W115 • D180 • H390  
top opening diameter 109 (upper)  
practical capacity 600ml  
5cups

\* Comes with a metal filter and a cloth filter.



### SCA-5

C/T4 502901  
W150 • D186 • H355  
top opening diameter 130 (upper)  
practical capacity 600ml  
5cups

\* Comes with a metal filter and a cloth filter.



### RCR-50

C/T6 536302  
W264 • D139 • H190  
top opening diameter 100  
raw beans 50 g



**This drip-style cold brewed coffee device does not require speed adjustment.**

When water is put into the upper bowl, it flows and drips from the two slits of the dripper. The water drips completely in 1-2 hours without speed adjustment, enabling the casual enjoyment of authentic cold brewed coffee.



The dripping structure does not require adjustment.



A beaker-shaped pot.



**new**  
**SBS-5B**

C/T12 163263  
φ 116 · H 360  
top opening diameter 73  
practical capacity 600ml  
5 cups



Every drop creates the finest coffee

The slow dripping thoroughly extracts the flavor of the coffee, with a design that easily compliments a modern interior. The coffee's strength can be changed by adjusting the faucet.



Moisten the coffee grounds before extracting.



Use the faucet to adjust dripping rate.



**WDC-6**

C/T6 163201  
W150 • D129 • H455  
top opening diameter 77  
finished capacity 780ml  
2 - 6cups



**WDW-6**

C/T6 163225  
W205 • D135 • H475  
top opening diameter 77  
finished capacity 780ml  
2 - 6 cups



**PTN-5BZ**

C/T6 163379  
W190 • D170 • H290  
top opening diameter 82  
practical capacity 600ml  
5cups



Place coffee grounds.



The faucet makes it easy to use.





**“FURIKO,” an entirely new cold brewed coffee device.**

“FURIKO, an entirely new cold brewed coffee device overturning the conventional idea of a water dripper, features short-time extraction. The track of the pendulum optimized for the V60 dripper shape makes it possible to complete extraction in 30 minutes.



**new**

**WDF-6**

C/T1 163386  
W 205 • D 205 • H 985  
top opening diameter 77  
finished capacity 780ml  
2 - 6 cups

## Special coffee starts with the first drip

The water drips for 5 hours, extracting 2000ml of coffee into two flasks.  
The dripping rate during extraction can be adjusted using the faucet located on both sides.



### WDW-20

C/T1 163232  
W290 • D230 • H980  
top opening diameter 105 (upper bowl)  
finished capacity 2,000ml  
20cups





# Filter-in Coffee Bottle

## Cold Brewed Coffee



### Wine bottle shaped cold brew coffee bottle

Just by adding coffee grounds and water, you can make iced coffee. Put coffee grounds in the strainer, and place the lid. Set the spout and pour small amounts of water inside. Once the water is poured, put the stopper and gently shake the bottle to start the extraction. Refrigerate for approximately 8 hours for the cold-brew to complete.



The strainer can be removed. The upper parts are designed to put a lid on the bottom strainer.



Align the strainer with the spout.



Pour directly.



**FIC-70-MC**  
C/T24 033436  
W87 • D84 • H300  
top opening diameter 71  
finished capacity 650ml  
5cups only



**FIC-70-CBR**  
033443





## Cold Brew Coffee

### Cold brew coffee jug and pitcher

Just by adding coffee grounds and water, you can make iced coffee. Place coffee grounds in the strainer, and set the lid and spout. Slowly pour water into the carafe until full and refrigerate for approximately 8 hours for the cold brew to complete.



Pour coffee while the strainer is attached.  
(CBS-10)



Attach the strainer to the spout.  
(CBC-10)



Pour the coffee after removing the strainer.  
(CBC-10)



#### **CBS-10HSV**

C/T24 036871  
W 100 • D 94 • H 290  
top opening diameter 88  
finished capacity 1,000ml  
8 cups only



#### **CBC-10SV**

C/T12 165021  
W 152 • D 103 • H 310  
top opening diameter 88  
finished capacity 1,000ml  
8 cups only

## V60 Glass Iced Coffee Maker



## V60 Glass Iced Coffee Maker

Iced coffee maker, in which coffee is cooled with ice while it drips. The long strainer containing ice cools the dripping coffee. This coffee maker is made with transparent materials only. Enjoy iced coffee with a clear taste in a cool manner!



For hot drink

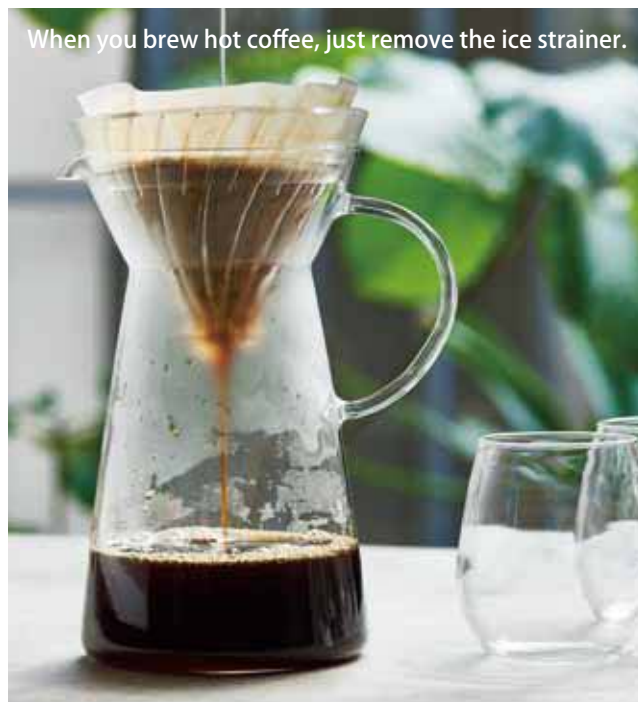


A ring holder made of transparent silicon rubber is attached to the upper section of the dripper.

### VIG-02T

C/T12 142671  
W 165 • D 120 • H 235  
top opening diameter 116  
practical capacity 700ml

When you brew hot coffee, just remove the ice strainer.



## Just shake it, and make foamed milk

A manual shaker milk frother. Fill the cup to the measurement mark with cold milk. Set up the filter and the upper and lower cups and shake well for about 20-30 seconds. This will make smooth, foamed milk for cappuccinos and lattes. By transferring the foam milk inside a microwave safe container and heating it up, you can enjoy it with hot drinks as well.



### LS-70-OW

C/T24 402768  
 $\phi$  72 · H 173  
 top opening diameter 68  
 practical capacity - milk 70ml

(This can make foamed milk for 2 cups of cappuccino.)



### LS-70-PC

402799



Pour cold milk up to the measurement marking.



Shake well for about 20-30 seconds.



Top off your favorite drink.

## Fluffed up milk in a blink of an eye

Microwave milk until it is 40-60°C. Use the following guidelines-500W approximately 50-60 seconds, 600W approximately 40-50 seconds. Tilt slightly and press the button, foaming the milk for 30-40 seconds. This will make smooth foamed milk for cappuccinos and lattes.



### CZ-1

C/T24 402737  
 $\phi$  75 · H 221



Milk measurement marking visible from the inside.



The lid can be used as an equipment holder.



Can be poured directly into a cup.



For microwave



### CQT-45

C/T24 402751  
 W 145 · D 105 · H 205  
 top opening diameter 81  
 practical capacity - milk 100ml

(This can make foamed milk for 3 cups of cappuccino.)